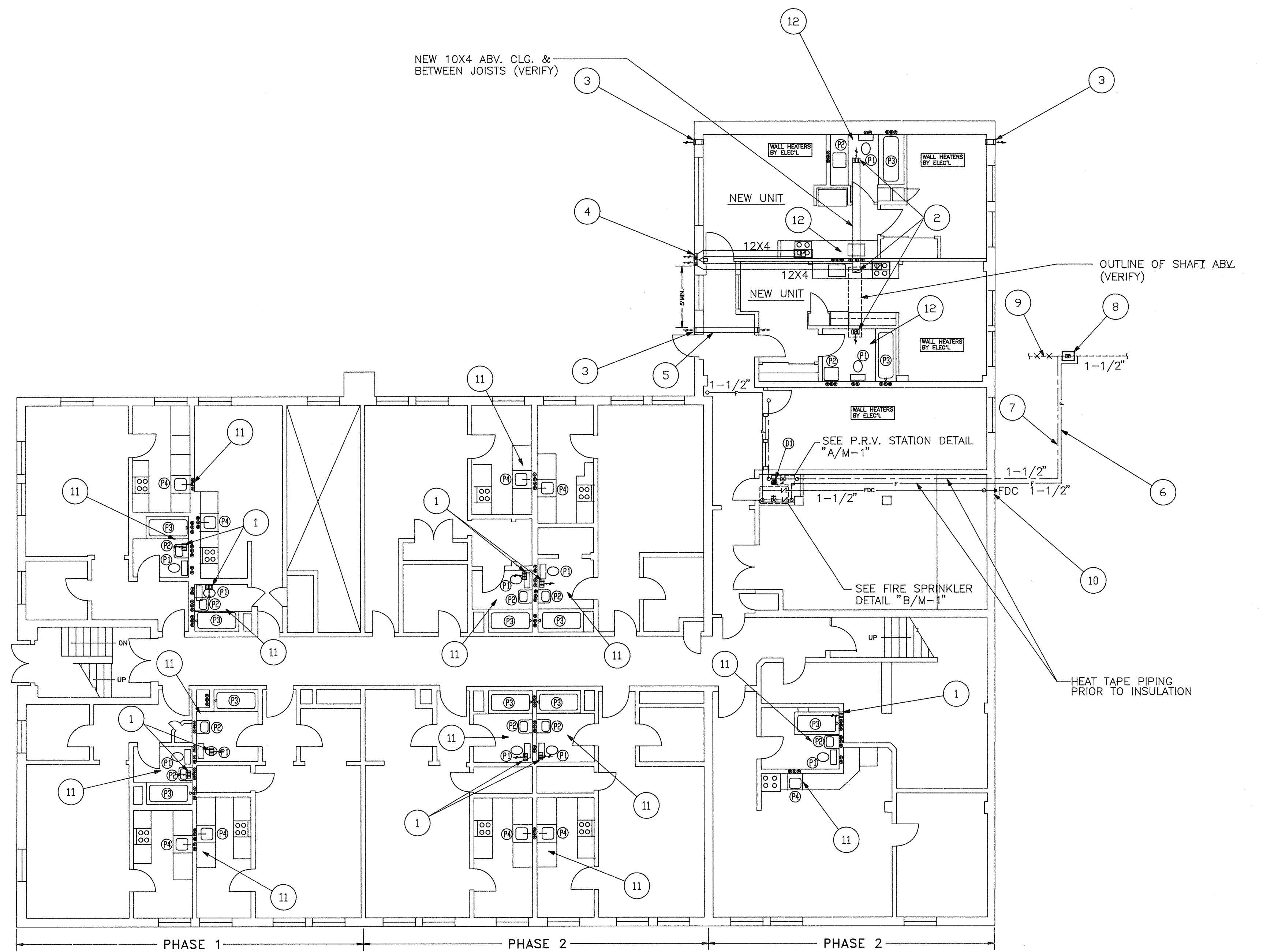


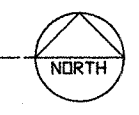
NOTES:

- 1 REPLACE THE EXISTING GRAVITY VENTED BATHROOM EXHAUST GRILLES WITH NEW (KRUGER-S80H OR EQUAL WITH OPPOSED BLADE VOLUME DAMPERS) (SEE ROOF PLAN FOR NEW POWERED EXHAUST SYSTEM). VERIFY EXACT SIZE, QUANTITIES AND LOCATION OF EACH GRILLE AND DUCTWORK AT SITE. ADJUST THE FAN & GRILLE AS REQUIRED TO EXHAUST 100 CFM AT EACH GRILLE. SUBMIT AIR BALANCING REPORT UPON COMPLETION.
- 2 NEW 8X6 BATHROOM EXHAUST GRILLES FOR THE NEW BATHROOMS WITH 7" (or 10X4) DUCT UP TO NEW "EF-7" (KRUGER-S80H OR EQUAL W/ OPPOSED BLADE VOLUME DAMPERS). VERIFY EXACT GRILLE LOCATION & DUCTWORK ROUTING AT SITE. ADJUST FAN & GRILLE AS REQUIRED TO EXHAUST 100 CFM AT EACH GRILLE. SUBMIT AIR BALANCING REPORT UPON COMPLETION.
- 3 MIN. 4" WHOLE HOUSE VENTILATION LOUVER AND DUCT OPENING WITH INSECT SCREEN AND DAMPER AS LISTED AND APPROVED PER THE CITY OF SEATTLE. BOTTOM ELEVATION AT ±8' A.F.F. (COORDINATE WITH ARCH'L). INDOOR GRILLE PAINTED PER ARCH.
- 4 24X6 LOUVER FOR SOURCE SPECIFIC RANGE HOOD EXHAUST WITH INSECT SCREEN. BOTTOM ELEVATION AT ±6'-8" A.F.F. (COORDINATE WITH ARCH'L)
- 5 4" DUCT ABOVE CORRIDOR INSIDE RATED SHAFT TO TOP WALL GRILLE OPEN'G. COORD. WITH ARCH'L & PAINT GRILLE PER ARCH.
- 6 NEW 1-1/2" WATER LINE FOR THE FIRE SUPPRESSION SPRINKLER SYSTEMS. VERIFY AND ROUTE EXACT LOCATION AT SITE & INSTALL PER THE CITY OF SEATTLE.
- 7 NEW 1-1/2" WATER LINE FOR THE DOMESTIC WATER SYSTEMS. VERIFY AND ROUTE EXACT LOCATION AT SITE & INSTALL PER THE CITY OF SEATTLE.
- 8 EXISTING WATER METER VAULT. ABANDON THE EXISTING SERVICE TO BUILDING & MAKE TWO NEW CONNECTIONS DOWNSTREAM & UPSTREAM OF THE METER FOR DOMESTIC AND FIRE SPRINKLERS.
- 9 ABANDON THE EXISTING DOMESTIC SERVICE TO THE BUILDING. VERIFY THE EXACT SIZE AT SITE TO ASSURE THAT THE NEW 1-1/2" SERVICE IS EQUAL OR LARGER THAN THE EXISTING SERVICE LINE TO BUILDING.
- 10 NEW 1-WAY 2-1/2" HOSE CONNECTION FIRE DEPARTMENT CONNECTION FOR THE NEW SPRINKLER SYSTEM. INSTALL PER THE CITY OF SEATTLE FIRE DEPARTMENT.
- 11 VERIFY AT SITE EXACT LOCATION OF ALL PIPING. REPLACE EXISTING WASTE, COLD WATER & HOT WATER PIPING WITH NEW. UTILIZE THE EXISTING VENT AS REQUIRED. MINIMUM PIPE SIZES SHALL BE AS SHOWN ON THE PLUMBING FIXTURE CONNECTION SCHEDULE ON SHEET "M-1".
- 12 VERIFY AT SITE EXACT LOCATION OF ALL PIPING. INSTALL NEW WASTE, VENT, COLD & HOT WATER PIPING FOR THE NEW FIXTURES. VERIFY THE AVAILABLE VENT STACK SIZES & CONNECT NEW 2" VENT FOR THE NEW FIXTURES. MINIMUM PIPE SIZES SHALL BE AS SHOWN ON THE PLUMBING FIXTURE CONNECTION SCHEDULE ON SHEET "M-1".



BASEMENT PLAN

SCALE: 1/8"=1'-0"



DEFERRED MAINTENANCE IMPROVEMENTS FOR
THE BREMER APARTMENTS
 2905 FIRST AVENUE SEATTLE, WA

Capital Hill Housing Improvement Program
 COMMUNITY BASED NONPROFIT COOPERATIVE HOUSING DEVELOPMENT
 402 15th AVENUE EAST SEATTLE, WA 98112 (206) 329-7303

FRANK G. STICKNEY AND RONALD F. MURPHY, ARCHITECTS
 911 WESTERN AVE. • SEATTLE, WASHINGTON 98104 • (206) 623-1104

Stickney & Murphy



DATE: 2/5/92 (PERMIT SET)
 DRAWN BY: MDS
 CHECKED: Y.A.

BASEMENT PLAN

Abossein Engineering Corp.
 14042 N.E. 87th
 Suite 102
 Bellevue, WA 98007
 (206) 641-4926

SHEET
M-3
 OF 7 SHEETS